

# Cancer Web quest

Logon to: [//www.insidecancer.org/](http://www.insidecancer.org/)

Click "**Hallmarks of Cancer**" and go through the "**overview**"

1. A cancer or tumor can occur in \_\_\_\_\_ or \_\_\_\_\_ of the human body. Tumors can be in \_\_\_\_\_ or liquid form.

2. All cancers start with \_\_\_\_\_. Mutations can be inherited, however, less than \_\_\_\_\_ are inherited. Mutations usually are caused by \_\_\_\_\_ factors.

3. Usually, many mutations are needed to transform a normal cell into a \_\_\_\_\_ cell. As we age we accumulate more and more \_\_\_\_\_.

**Select "Growing uncontrollably"**

4. Cancer cells do not respond to \_\_\_\_\_ that regulate cell \_\_\_\_\_ and \_\_\_\_\_. Cells grow unchecked.

**Select "Evading Death"**

5. Cancers can result from cells that do not \_\_\_\_\_ when they should.

6. Cell suicide is also called \_\_\_\_\_.

**Select "Processing Nutrients"**

7. What do cancer cells need to do in order to become a tumor?  
\_\_\_\_\_

8. What is angiogenesis and why do cancer cells need to become angiogenic?  
\_\_\_\_\_  
\_\_\_\_\_

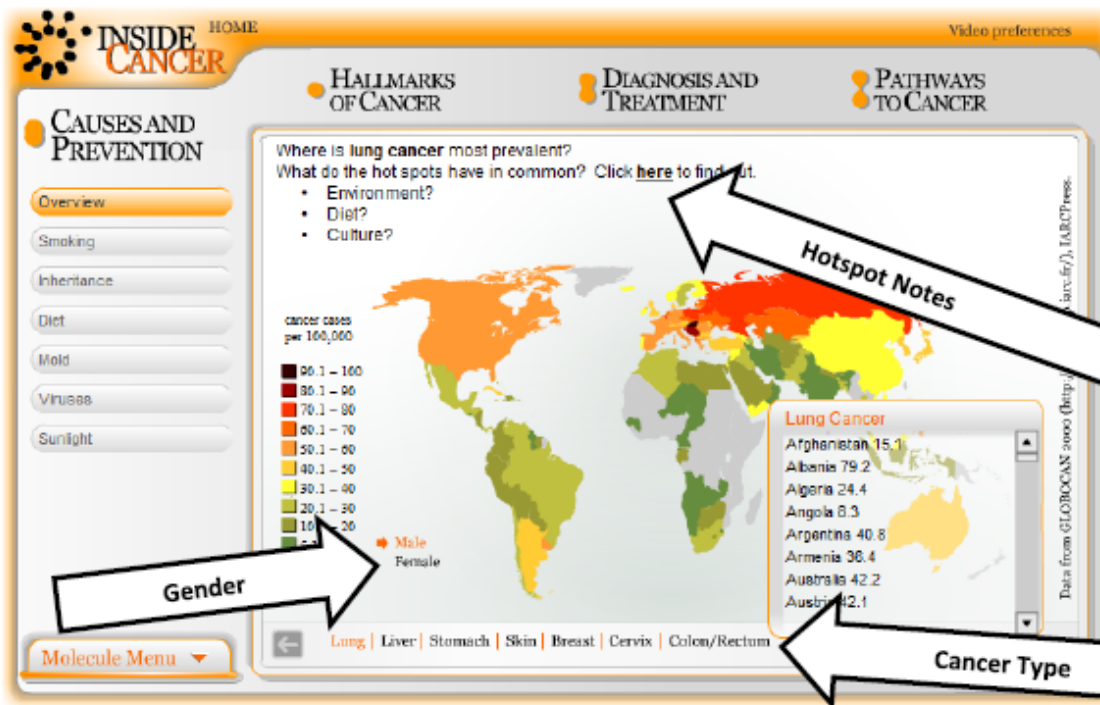
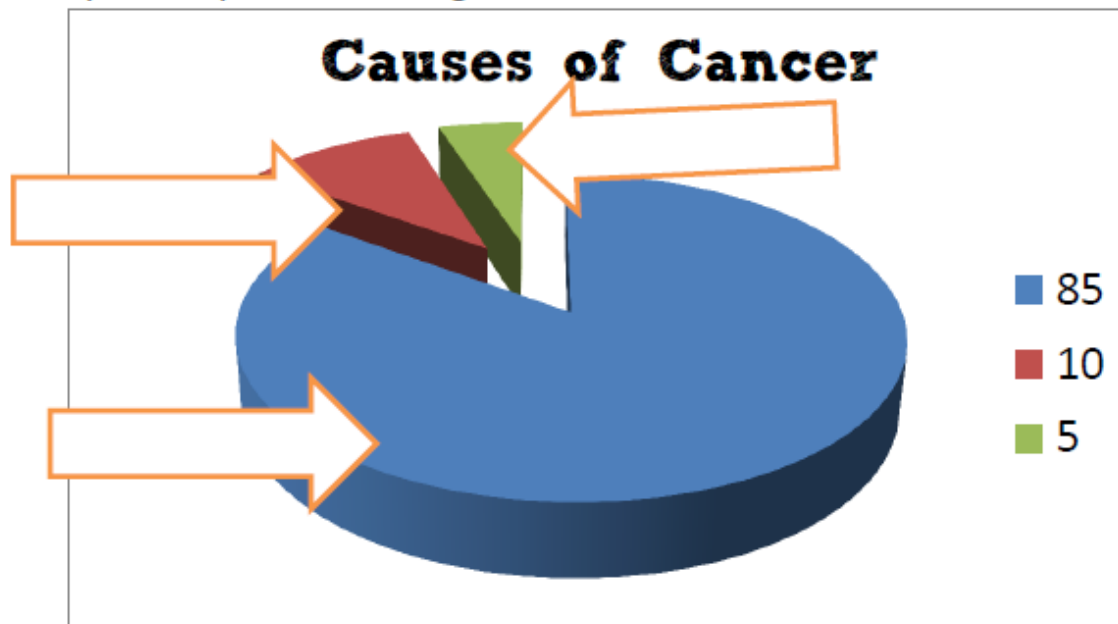
**Select "Invading Tissues"**

9. Why causes most cancer deaths? \_\_\_\_\_

10. Define Metastasis: \_\_\_\_\_

Watch the overview in "Causes and Prevention"

11. Complete the pie chart showing what causes cancer.



12. Click through the different forms of cancer at the bottom of the map image.

Use the information to complete the table on the following page.

<b>US Cancer Rates &amp; Causes</b>			
Type of cancer	Cancer Cases / 100,000		Hot Spot notes <i>(Why does the US have that rate of cancer)</i>
	Male	Female	
Lung			
Liver			
Stomach			
Skin			
Breast			
Cervical			
Colon/Rectum			

13. Go through each cause of cancer using the **left tabs**. Record at least 2 notes for each.

**Smoking:**

**Inheritance:**

**Diet:**

**Mold:**

**Viruses:**

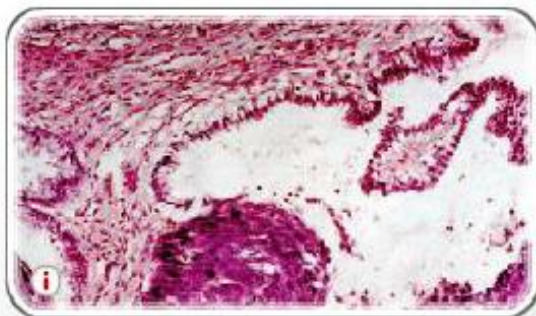
**Sunlight:**

14. How is skin cancer affected by your proximity to the equator and your skin color?

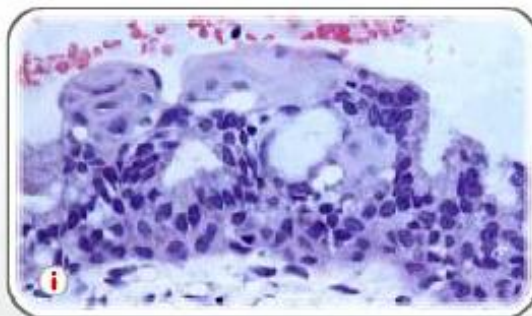
## Select "Diagnosis and Treatment" Click on Pathology

15. Using the Pathology information, circle either cancerous or normal and state why.

### CERVICAL CELLS



Cancerous / Normal

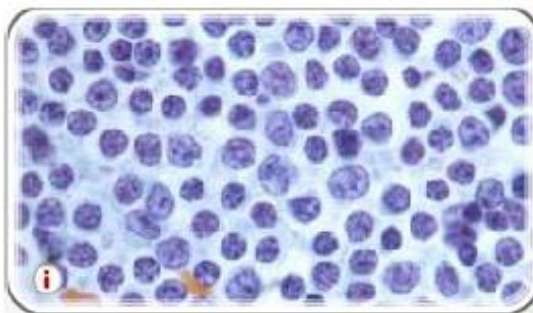


Cancerous/ Normal

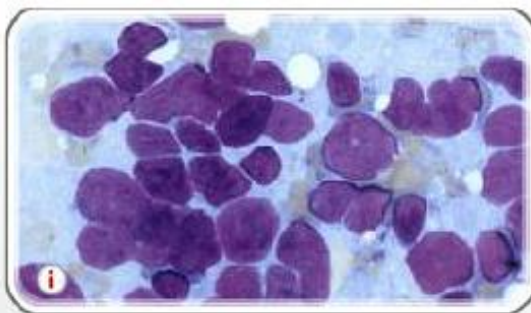
Evidence:

---

### LYMPH NODE CELLS



Cancerous / Normal

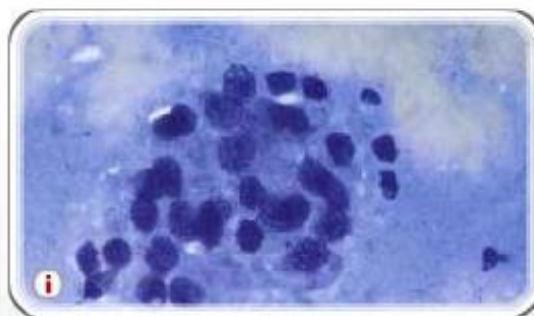


Cancerous/ Normal

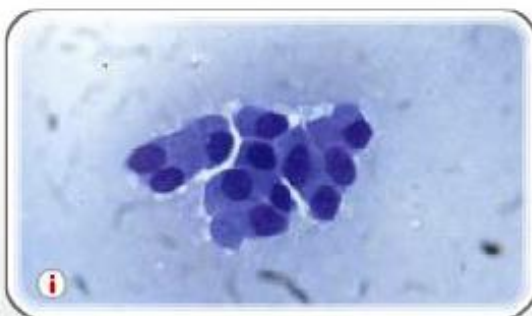
Evidence:

---

### PROSTATE GLAND CELLS



Cancerous / Normal



Cancerous/ Normal

Evidence:

---