

# CANCER WEB QUEST

Logon to: [//www.insidecancer.org/](http://www.insidecancer.org/)

Click "**Hallmarks of Cancer**" and go through the "**overview**"

1. A cancer or tumor can occur in \_\_\_\_\_ or \_\_\_\_\_ of the human body. Tumors can be in \_\_\_\_\_ or liquid form.
2. All cancers start with \_\_\_\_\_. Mutations can be inherited, however, less than \_\_\_\_\_ are inherited. Mutations usually are caused by \_\_\_\_\_ factors.
3. Usually, many mutations are needed to transform a normal cell into a \_\_\_\_\_ cell. As we age we accumulate more and more \_\_\_\_\_.

## **Select "Growing uncontrollably"**

4. Cancer cells do not respond to \_\_\_\_\_ that regulate cell \_\_\_\_\_ and \_\_\_\_\_.

## **Select "Evading Death"**

5. Cancers can result from cells that do not \_\_\_\_\_ when they should.
6. Cell suicide is also called \_\_\_\_\_.

## **Select "Processing Nutrients"**

7. What do cancer cells need to do in order to become a tumor?  
\_\_\_\_\_

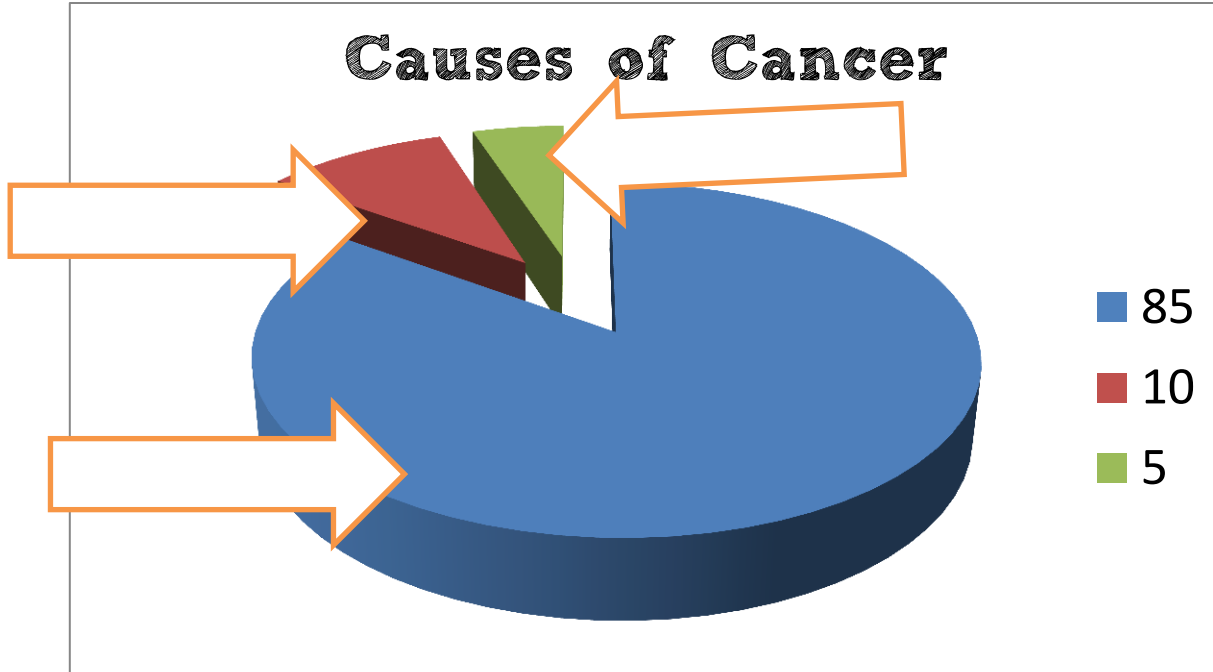
8. What is angiogenesis and why do cancer cells need to become angiogenic?  
\_\_\_\_\_  
\_\_\_\_\_

## **Select "Invading Tissues"**

9. Why causes most cancer deaths? \_\_\_\_\_
10. Define Metastasize: \_\_\_\_\_

Watch the overview in "Causes and Prevention"

11. Complete the pie chart showing what causes cancer.



Where is **lung cancer** most prevalent?  
 What do the hot spots have in common? Click [here](#) to find out.

- Environment?
- Diet?
- Culture?

Legend: cancer cases per 100,000

90.1 - 100
80.1 - 90
70.1 - 80
60.1 - 70
50.1 - 60
40.1 - 50
30.1 - 40
20.1 - 30
10.1 - 20
0.1 - 10

Hotspot Notes

Gender

Cancer Type

Lung Cancer

Afghanistan	15.1
Albania	79.2
Algeria	24.4
Angola	8.3
Argentina	40.8
Armenia	36.4
Australia	42.2
Austria	42.1

Lung | Liver | Stomach | Skin | Breast | Cervix | Colon/Rectum

12. Click through the different forms of cancer at the bottom of the map image.

Use the information to complete the table on the following page.

## US Cancer Rates & Causes

Type of cancer	Cancer Cases / 100,000		Hot Spot notes <i>(Why does the US have that rate of cancer)</i>
	Male	Female	
Lung			
Liver			
Stomach			
Skin			
Breast			
Cervical			
Colon/Rectum			

13. Go through each cause of cancer using the **left tabs**. Record at least 2 notes for each.

**Smoking:**

**Inheritance:**

**Diet:**

**Mold:**

**Viruses:**

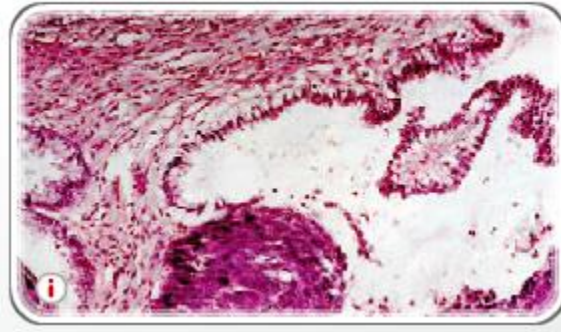
**Sunlight:**

14. How is skin cancer affected by your proximity to the equator and your skin color?

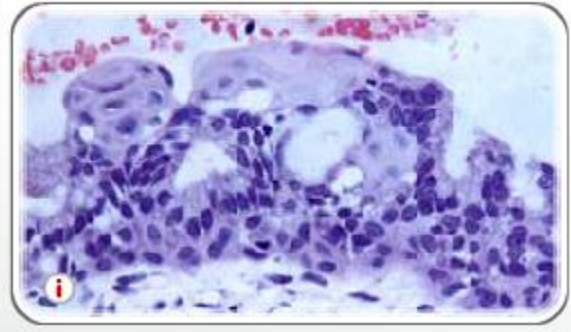
## Select "Diagnosis and Treatment" Click on Pathology

15. Using the Pathology information, circle either cancerous or normal and state why.

### CERVICAL CELLS



Cancerous / Normal

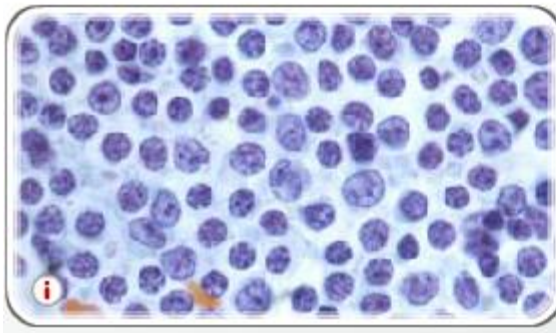


Cancerous/ Normal

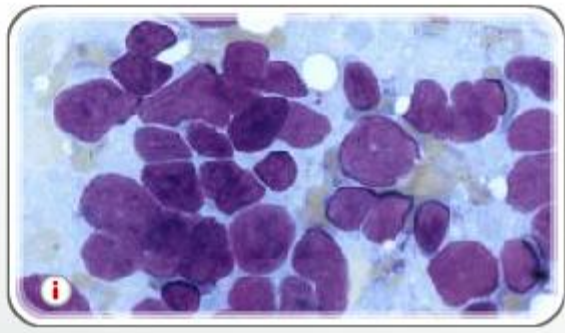
Evidence:

---

### LYMPH NODE CELLS



Cancerous / Normal

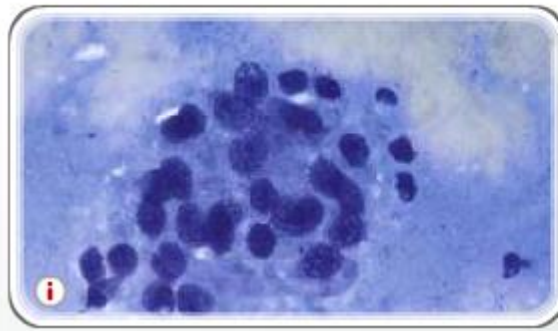


Cancerous/ Normal

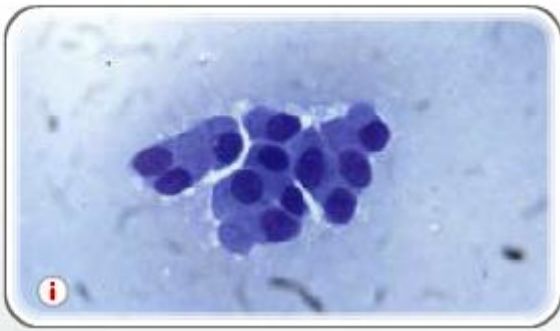
Evidence:

---

### PROSTATE GLAND CELLS



Cancerous / Normal



Cancerous/ Normal

Evidence:

---